



The Newsletter of the Wisconsin Section of the American  
Society of Agricultural and Biological Engineers

WI ASABE SECTION  
[www.wiasabe.org](http://www.wiasabe.org)



The Society  
for  
engineering  
in  
agricultural,  
food, and  
biological  
systems

#### Save the Date!

Our Fall Meeting  
will be:

**October 3, 2012**

in conjunction  
with World Dairy  
Expo

Speaker: ASABE  
President Tony  
Kajewski

**WEDNESDAY July 18<sup>th</sup> 2012**

**Section Meeting**

**Outagamie County, Wisconsin**

#### Schedule of Events

##### **Farm Technology Days**

9:00am – 5:00pm New London

##### **WALSSA Picnic** {at the Fox Valley Technical Institute, in Appleton }

3:00-8:00 pm Social Time and Dinner

at approximately 4pm meet Special Guest, Dean Kate  
VandenBosch, the new University of Wisconsin, College of  
Agriculture and Life Sciences Dean!

**No Pre-Registration Required for the Summer Events!**

#### **INSIDE THIS ISSUE**

Meeting Schedule of Events  
Directions  
Upcoming ByLaw Voting Notification

May 23<sup>rd</sup> Meeting Report  
Secretary/Treasurer's Report  
Officer Contact Information

## July 18<sup>th</sup> - SCHEDULE OF EVENTS



**Sugar Creek Farm LLC, N6848 Cty Rd D, New London, WI**  
**Heideman Farms, W10715 County Road WW, New London, WI**

The Wisconsin Farm Technology Days is the largest agricultural show in Wisconsin and one of the largest in the nation. The three-day outdoor event showcases the latest improvements in production agriculture, including many practical applications of recent research findings and technological developments. Each year, it is held in a different Wisconsin county - on a different host family farm.

Wisconsin Farm Technology Days provides visitors the opportunity to see and talk with more than 600 commercial and educational exhibitors in Tent City who are eager to visit with them about their machinery, equipment, facilities, products, and services needs. A wide variety of agricultural products and services used in today's dairy, livestock, and crop production systems in Wisconsin will be on display. In addition, specialists and county extension agents from the University of Wisconsin and state and federal agencies are on hand to answer questions. Educational exhibits, special interest displays, and field machinery demonstrations provide something of interest for everyone.

Since the first show held in Waupaca County in 1954, the Board of Directors of the Wisconsin Farm Technology Days, Inc. - a non-profit, educational organization- has guided the annual show. The Board is comprised of representatives of state and federal agencies involved in agriculture and natural resources, the University of Wisconsin, and the agribusiness/industry and farming sectors.

Virtually all activity at the host county level is coordinated and managed by the county's University of Wisconsin-Extension Office in cooperation with the county's Farm Technology Days committee and 700-1000 volunteers.

### Show Hours July 17<sup>th</sup>-19<sup>th</sup>

Tuesday	9:00am - 5:00pm
Wednesday	9:00am - 5:00pm
Thursday	9:00am - 4:00pm

**Admission = \$5**

**Free Parking**

<http://www.wifarmtechnologydays.com/>

## WALSAA PICNIC 3-8PM



After the show, enjoy the company of ASABE and WALSAA Members at the annual WALSAA Picnic!

WALSAA (Wisconsin Agricultural and Life Sciences Alumni Association) is a 501(c)(3) charitable organization that supports the connection of students, faculty and alumni to the University of Wisconsin's College of Agricultural and Life Sciences.

Each year WALSSA hosts a picnic in conjunction with Farm Technology Days, we are again honored to be part of the festivities.

No pre-registration required for this event. Pay at the door!

Menu: Burgers, Brats and associated picnic fare including beverages

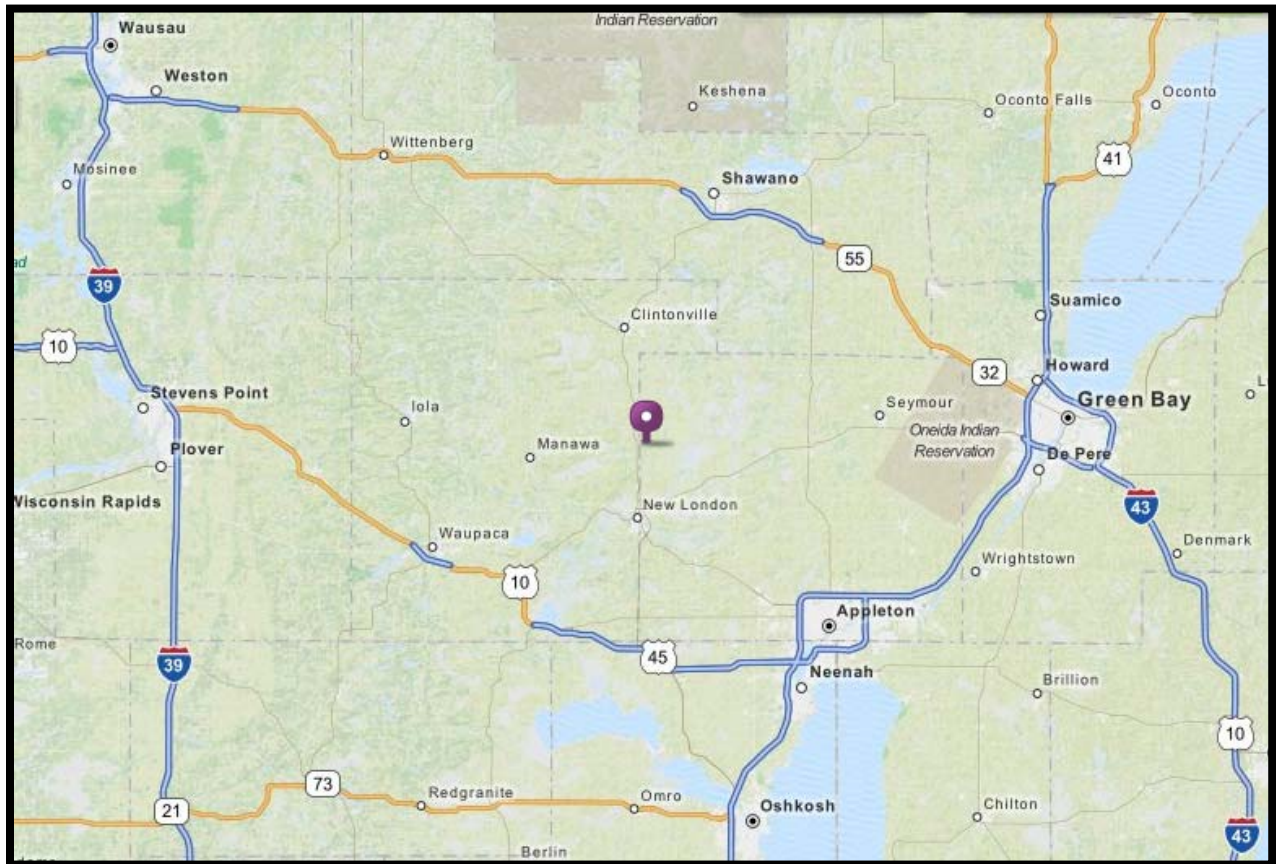
Cost: \$15 and students are free

Location:

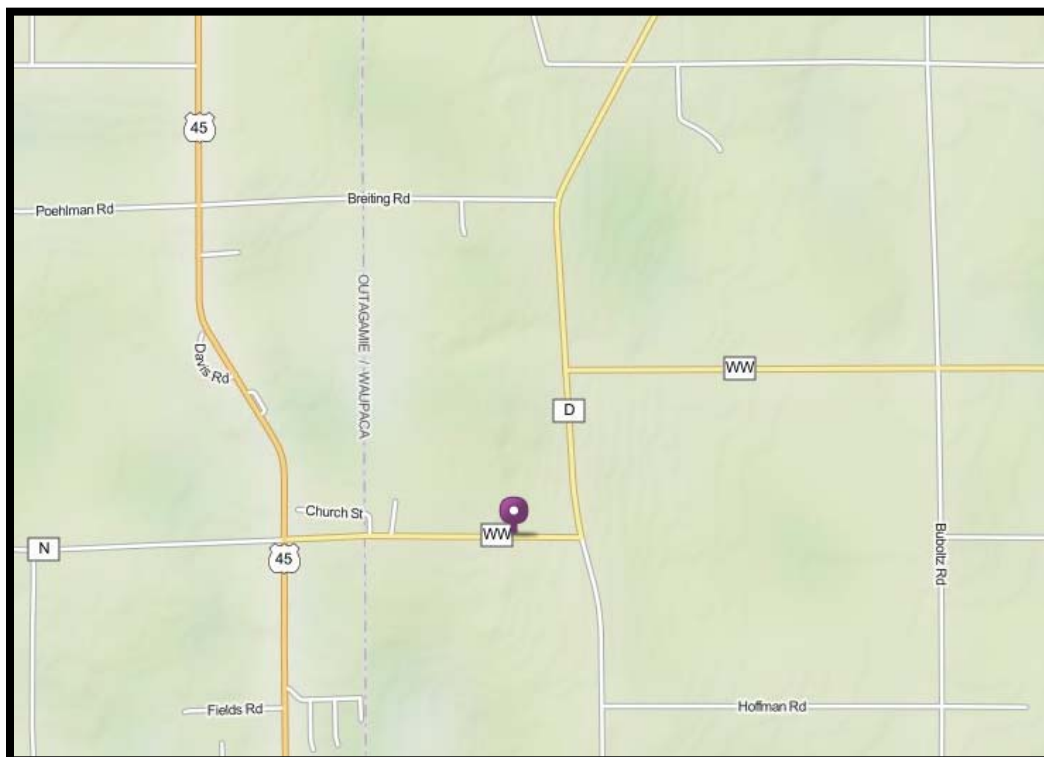
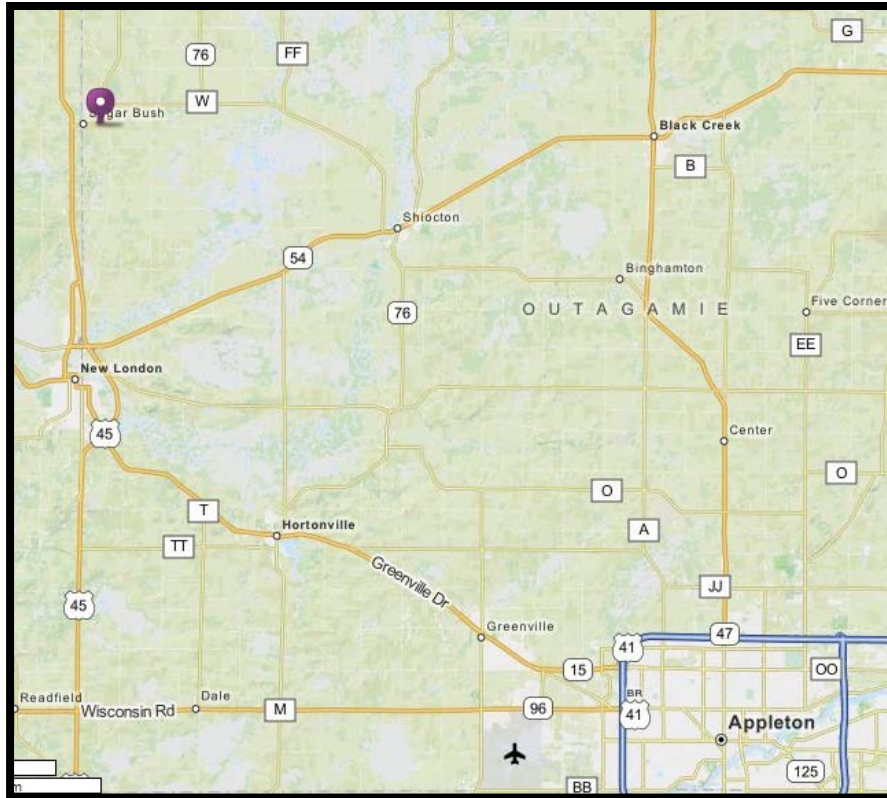
Fox Valley Technical Institute  
1825 North Bluemound Drive  
Appleton WI 54912



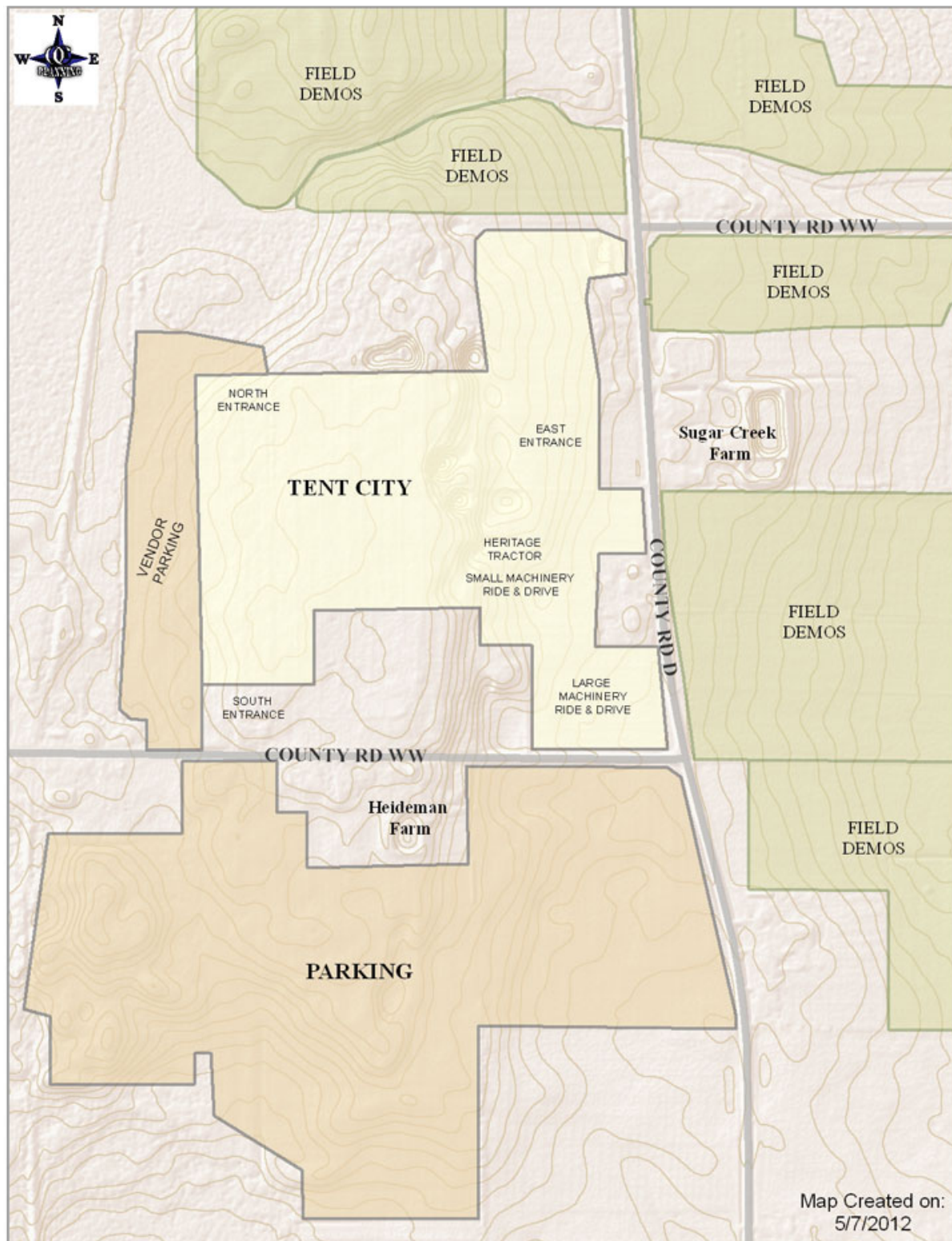
## Farm Technology Days Map



**Please be advised Hwy 15 between the Fox Cities and Hortonville will be under construction this summer.**



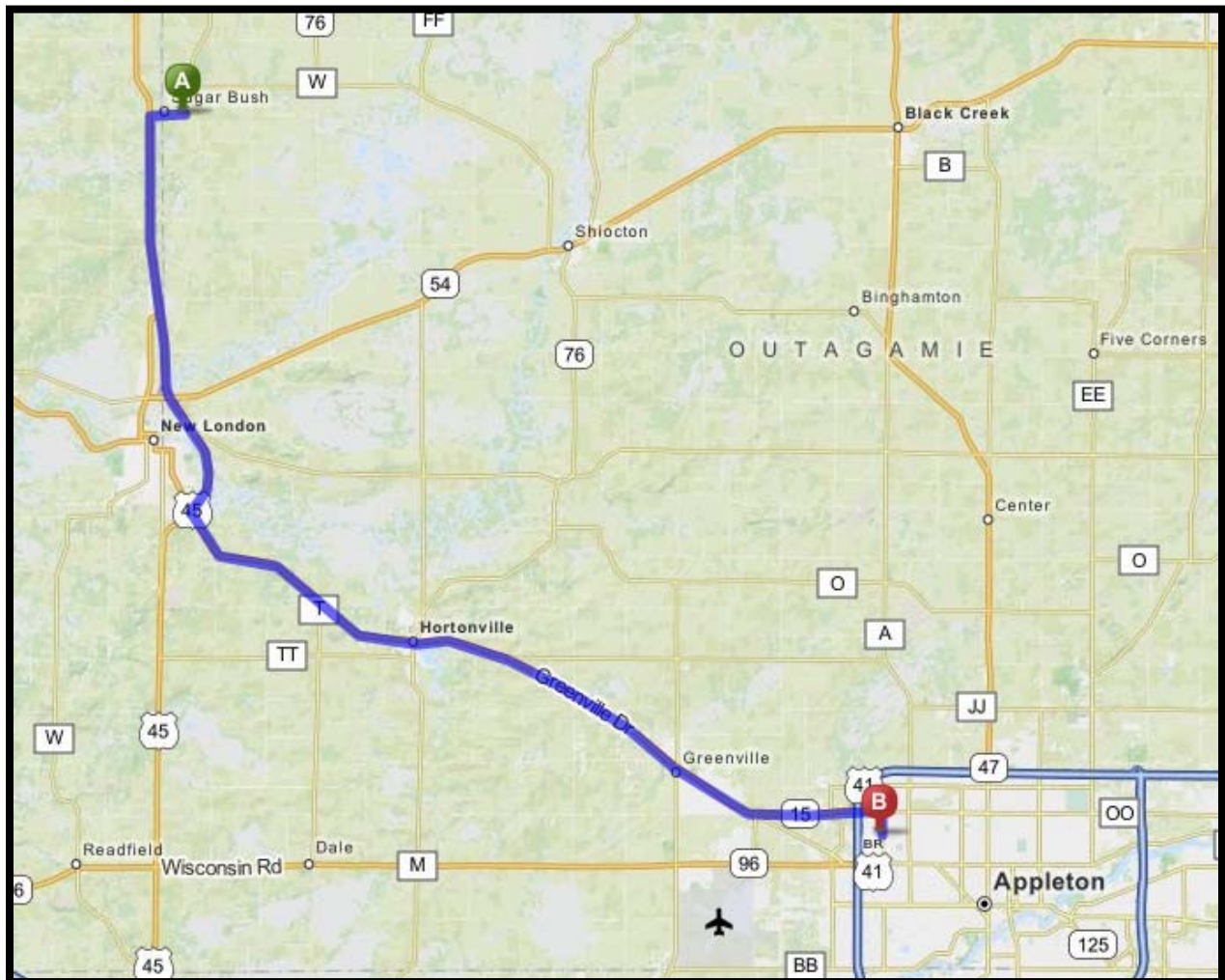




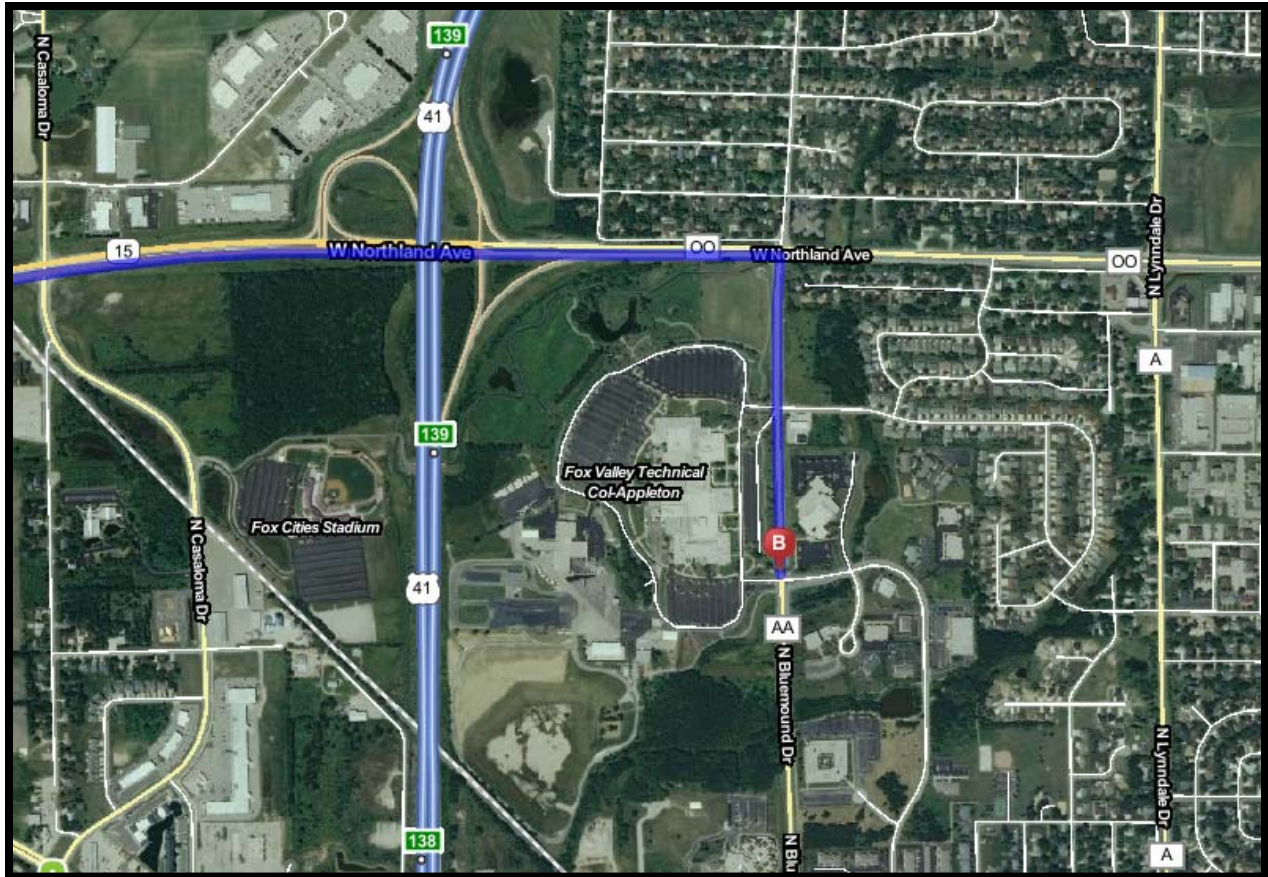
## Fox Valley Technical Institute Map

### Directions from Tent City (Farm Tech Days) to Fox Valley Tech Institute

1. Start out going west on CR-WW toward Church St.
2. Turn left onto US-45 S.
3. Turn left onto WI-15/CR-T. Continue to follow WI-15 E.
4. WI-15 E becomes CR-OO E/W Northland Ave.
5. Turn right onto N Bluemound Dr/CR-AA.
6. Fox Valley will be on your right







---

**NOTICE:** Upcoming Vote on Wisconsin Section ByLaws by Section Members Expected

The following are changes recommended by the Executive Committee.

- Updating the name of the organization from “American Society of Agricultural Engineers” to “American Society of Agricultural and Biological Engineers” to be in alignment with the National Constitution.
- Updating the objects of the section to be in alignment with the National Constitution
- Adding Webmaster as an elected officer position\*

Our current ByLaws can be found on our website on the “Member Section” Page.

\*The addition of Webmaster as an elected officer position will need to be voted on by the Section before the change can be made.



## Details from the May 23rd Tours

---

### **Monroe Truck Equipment Tour** (pictures and report by Dan Thiemke)

- About a 50 year old company
- Approximately 500 employees at the Monroe facility
- Privately owned by three people who bought the company from the original founder about seven years ago
- Main operations include laser, bend, weld, paint, and assembly
- They can cut up to 1" steel material
- Most machined parts are purchased
- They have two powdercoat paint lines plus one wet spray booth
- They have 5 other facilities and a dealer network for additional truck installation locations
- Everything is done in a batch process, there is no "main assembly line"
- Main products include snowplows, snow and ice removal attachments, and truck bodies (i.e. for Truegreen)
- Use Autodesk Inventor for their CA D system & Meridian for PDM



Front of Main Entrance



hydraulic shear, capable of shearing up to 1" material



partially assembled truck body for TrueGreen, including rotational molded tank for holding chemical



snowplow weld fixture



assembling snow removal equipment onto a truck body



## **Badger State Ethanol Plant** (pictures by Naomi Uhlenhake)

In May 2000, Badger State Ethanol, LLC was founded based on the vision of its two founders, John Malchine and Gary Kramer. The primary driving force shared by both of these men was a mutual passion to help develop American agriculture and to do so following sound business principles. The fact that no one else had ever built an ethanol plant of this magnitude in Wisconsin created some interesting challenges for both of these developers.

The company started as a green field project so it was necessary to first create a business plan, budget, find an acceptable plant location, establish contracts, obtain permits, establish financing, create a prospectus through a registered offering and sell the equity. Gary and John accomplished all of the above in 15 months. With all of this behind them, construction of the plant started in July of 2001. Construction was completed in October of 2002 with the plant startup right after that. The plant reached name plate capacity in five days and passed all performance guarantees in just 12 days.

Today, BSE has increased production to over 57 million gallons of ethanol per year. In addition to the DDGS, we also produce 50% corn protein (Dry Matter Basis) feed and corn oil. Carbon dioxide is also captured for use in the food industry. BSE also makes America less dependent on foreign oil with our clean burning, environmentally friendly, renewable fuel.

Source: <http://www.badgerstateethanol.com>





## Guest Speaker, Ryan Pearcy

(report by Dan Thiemke, pictures by Naomi Uhlenhake )

Speaker, Ryan Pearcy talked about the following advances in forage equipment

- Triple mowers (at 30 acres/hr) vs. self propelled mowers (at 15 acres/hr)
- Use of high strength steel to decrease the weight of equipment
  - Example was 5000 lb triple mower vs. 3900 lb redesign using high strength steel
  - Less ground compaction
  - Higher fuel efficiency
- Elimination of conditioning to speed cutting
  - Not necessarily needed for either chopping or higher grass content
- Precision machine guidance
- Variable crop conditioning
- Windguards on mergers to eliminate clumping
- Lowering the presence of ash by use of a merger instead of a rake
- Decreasing the time between baling and wrapping
  - i.e. wrapping integrated into the baler
- Non-stop round baling
- Telematics
  - i.e. communication between windrower and chopper for windrow location identification
- RFID tags
- Shredlage
- Traffic control and tramlines

### About Ryan

Ryan grew up on a beef and custom hay farm in western Missouri. Ryan went on to earn a bachelor degree in Agriculture Systems Management from the University of Missouri-Columbia. Following graduation he served as a Technical and Sales instructor for Deere and Company in Columbus Ohio. While working as an instructor he earned a Master Degree in Agricultural Education from the University of Illinois. After five years with Deere Ryan joined KUHN as the Haytool Product Manager.





# Secretary's Report

May 23 2012

The May 23<sup>rd</sup> ASABE WI Section meeting was held at the Heritage House in Monroe, WI.

The day's events started with a tour of Monroe Truck Equipment, Inc. Monroe Truck Equipment is a 50 year old company that specializes in distributing, installing and painting Pickup Truck Accessories and other truck equipment. They also manufacture a complete line of snow and ice control equipment. Besides the manufacturing facility in Monroe, they also have five other facilities and a dealer network for additional truck installations.

The next tour took place at Badger State Ethanol located in Monroe, WI. Badger State Ethanol was founded in May of 2000 and was the first ethanol plant of this scale to ever be built in Wisconsin. Today Badger State Ethanol produces over 57 million gallons of ethanol per year along with Distillers Dried Grains with Solubles, 50% corn protein feed and oil as well as captured Carbon Dioxide which is used in the food industry.

Following the tours was a social time at the Heritage House, followed by a presentation by Ryan Pearcy of Kuhn North America on the advances that are taking place in forage equipment. Topics such as: Triple mowers vs. self propelled, High strength steel to decrease equipment weight, Elimination of crop conditioning and Precision machine guidance were discussed.

- The business meeting was called to order after the dinner at Heritage House
  - Introduction of students and guests
    - Students: Andy Holstein, Aaron Bohnhoff, Brian Straub
    - Guests: Matt Burzon and Bryan Anderson from Titus Energy in Milwaukee
  - Professor Straub gave a brief update on the current state of the UW BSE Department
  - Officer Reports
    - Vice Chair Program (Prof. Straub) reported that our next meeting will be held in conjunction with Farm Technology Days on July 18<sup>th</sup> in. He is making arrangements for us to join the WALSAA group for their picnic and has asked the new Dean of the UW College of Agriculture to address our group. Also, the new President of ASABE has agreed to speak at our October meeting which will be held in conjunction with World Dairy Expo.
    - Vice Chair Membership (Shane Williams) reported that we have four new members that joined our section in the past month. Shane will be sending welcome letters to all new members on behalf of the section.
    - Refer to the last newsletter for Secretary and Treasurer reports
  - Old Business: None
  - New Business
    - Naomi Uhlenhake reported on activities of the Young Professionals group and involvement with the upcoming International meeting.
    - Dan Thiemke reported on a recommendation by the Executive Committee to revise the WI-Section bylaws in three main areas. The first two will be updated by default, the third will need to be voted on by the section membership by formal ballot. Notification of voting will be within the next few months. Proposed changes include:

- Updating the name of the organization to American Society of Agricultural and Biological Engineers to be in alignment with the national organization
- Updating the objects of the section to be in alignment with the national organization
- Adding the webmaster to the list of elected officers
- Meeting was adjourned at approximately 7:15.

Respectfully Submitted,

Daniel Thiemke, ASABE Wisconsin Section Chair 2012-2013

and

Jeffrey M. Marggi, ASABE Wisconsin Section Secretary 2012-2013

---

# Treasurer's Report

**08 JUNE 2012**

---

<b>Opening Balance</b>	<b>\$8727.89</b>
------------------------	------------------

**Revenue:**

<u>Date</u>	<u>From</u>	<u>Memo</u>	<u>Amount</u>
06/08/2012	Members	Meeting Revenue	\$300.00

**Total: \$300.00****Expenses:**

<u>Date</u>	<u>To</u>	<u>Memo</u>	<u>Check #</u>	<u>Amount</u>
-------------	-----------	-------------	----------------	---------------

**Total: \$0.0**

<b>Closing Balance</b>	<b>\$9,027.89</b>
------------------------	-------------------

Respectfully Submitted,

Jeffrey M. Marggi  
ASABE Wisconsin Section Treasurer 2012-2013



## ***Wisconsin Section ASABE 2012-2013 Officer Team***

**Chair**

Dan Thiemke  
John Deere Horicon Works  
(920) 485-5074

**Past Chair**

Tim Koch  
Schreiber Foods, Inc  
(920) 988-2408

**Vice Chair Program (Chair-Elect)**

Richard Straub  
UW-Madison  
(608) 262-3311

**Vice Chair Awards**

Troy Runge  
UW-Madison  
608-890-3143

**Vice Chair Membership**

Shane Williams  
Kuhn North America  
(608) 897-2131

**Vice Chair Public Relations**

Amanda Crowe  
USDA-NRCS  
(608) 576-7651

**Secretary and Treasurer**

Jeff Marggi  
McFarlane Mfg. Corporation  
(608) 897-2131

**Webmaster**

Nate Dudenhoeffer  
Dudenhoeffer Agricultural Technology  
(608) 432-5617

**Career Development Committee**

Neal Stoffel (Chair)  
Kondex Corporation  
(920) 269-4100

Chris Tamm  
Brillion Iron Works  
920-756-6361

Tom Hoffman  
Kuhn North America  
608-897-2131

**Nomination Committee**

Bill Bassett  
Kuhn North America, Inc.  
(608) 897-2131

Rod Zimmerman  
Kuhn North America, Inc.  
(608) 897-4508