



The Newsletter of the Wisconsin Section of the American
Society of Agricultural and Biological Engineers

WI ASABE SECTION
www.wiasabe.org



The Society
for
engineering
in
agricultural,
food, and
biological
systems

WEDNESDAY MAY 23rd 2012

Section Meeting

MONROE, WISCONSIN

Schedule of Events

TOURS

1:30-2:30: Monroe Truck Equipment

3:00-4:00: Badger State Ethanol Plant

MEETING {Heritage House in Monroe}

4:30-5:00: Social Time

5:00-6:00: Speaker, Ryan Pearcy from Kuhn

"New and Continuing Innovations in Forage Technology"

6:00: Dinner, followed by business meeting

To Attend the Tours and/or the Dinner Meeting

Please REGISTER

by Thursday May 17th

**Registration by this date allows the business to plan
their tours and for an accurate dinner reservation!**

INSIDE THIS ISSUE

May Meeting Schedule of Events

Directions

Registration

New Meeting Registration Option

WI Section Award Recipients

Secretary/Treasurer's Report

Officer Contact Information

MAY 23rd TOUR AND MEETING - SCHEDULE OF EVENTS

TOUR #1: Monroe Truck Equipment {1:30pm-2:30pm}

1051 West 7th Street

Monroe, WI 53566

Phone#: 608-328-8127

<http://www.monroetruck.com>

**Shorts, sandals, or open toe shoes are NOT
allowed in the Monroe Truck facilities.**

Monroe Truck Equipment, Inc. (MTE) is relatively young in the industry (established in 1958) compared to some, however, we have grown the fastest and become one of the largest because of our "HANDS-ON" management style, flexibility, sense of urgency and willingness to listen and react to our customers. From our roots as a one-man blacksmith shop, we have evolved into our present day form through perseverance, pride in our work & service above the industry standard with a willingness to try new ideas, products and techniques. We distribute, install and paint Pickup Truck Accessories and Truck Equipment, in addition to manufacturing a complete line of Snow & Ice Control Equipment.

Some facts about us that you might find interesting include:

- Richard L. Feller purchased a one-man welding shop in 1958, known as Monroe Machine & Welding.
- Continuous expansion led to a new 92,000 square foot facility built in 1988. Presently, this facility has been expanded to over 300,000 square feet located on 65 fenced acres.
- Employs over 525 people @ the Monroe location, with over 935 people employed company-wide.
- Products and services include:
 - Complete line of truck equipment (dump, utility & stake bodies)
 - Complete line of pickup accessories
 - Complete line of parts
 - Manufacture complete line of Snow & Ice Control equipment
 - Snowplows for pickup trucks
 - Steel fabricating
 - Fire apparatus
 - Armored vehicles
 - PPG computerized access color system for paint
 - Custom built bodies
- Offers Chevrolet, RAM, Ford & GMC Bailment
- Offers nation-wide ship-thru on GM vehicles
- Features:
 - (26) work bays for 2-shifts of mechanics
 - (2) downdraft paint booths for accessories
 - (3) downdraft paint booths for truck equipment including a powder coat paint system for fabricated & manufactured components

Source: <http://www.monroetruck.com>

TOUR #2: Badger State Ethanol Plant {3:00pm-4:00pm}

820 W. 17th Street **

Monroe, WI 53566

Phone 608-329-3900

<http://www.badgerstateethanol.com>

** If you are using a GPS or other navigation device please use this address: 1637 4th Avenue West, Monroe WI

In May 2000, Badger State Ethanol, LLC was founded based on the vision of its two founders, John Malchine and Gary Kramer. The primary driving force shared by both of these men was a mutual passion to help develop American agriculture and to do so following sound business principles. The fact that no one else had ever built an ethanol plant of this magnitude in Wisconsin created some interesting challenges for both of these developers.

The company started as a green field project so it was necessary to first create a business plan, budget, find an acceptable plant location, establish contracts, obtain permits, establish financing, create a prospectus through a registered offering and sell the equity. Gary and John accomplished all of the above in 15 months. With all of this behind them, construction of the plant started in July of 2001. Construction was completed in October of 2002 with the plant startup right after that. The plant reached name plate capacity in five days and passed all performance guarantees in just 12 days.

Today, BSE has increased production to over 57 million gallons of ethanol per year. In addition to the DDGS, we also produce 50% corn protein (Dry Matter Basis) feed and corn oil. Carbon dioxide is also captured for use in the food industry. BSE also makes America less dependent on foreign oil with our clean burning, environmentally friendly, renewable fuel.

Source: <http://www.badgerstateethanol.com>

MEETING: Heritage House {start at 4:00pm}

222 Old Argyle Rd. (Same as W5836 Old Argyle Rd.)

Monroe WI 53566

608-325-5254

<http://heritagehouseandhall.com/>

4:30pm -5:00pm: Social ½ Hour

5:00pm-6:00pm: Speaker, Ryan Pearcy from Kuhn,
"New and continuing innovations in Forage Technology"

6:00: Dinner (Heritage House in Monroe)

Menu: Chicken Kiev over rice, Salad, Rolls/butter, Coffee, Cheesecake

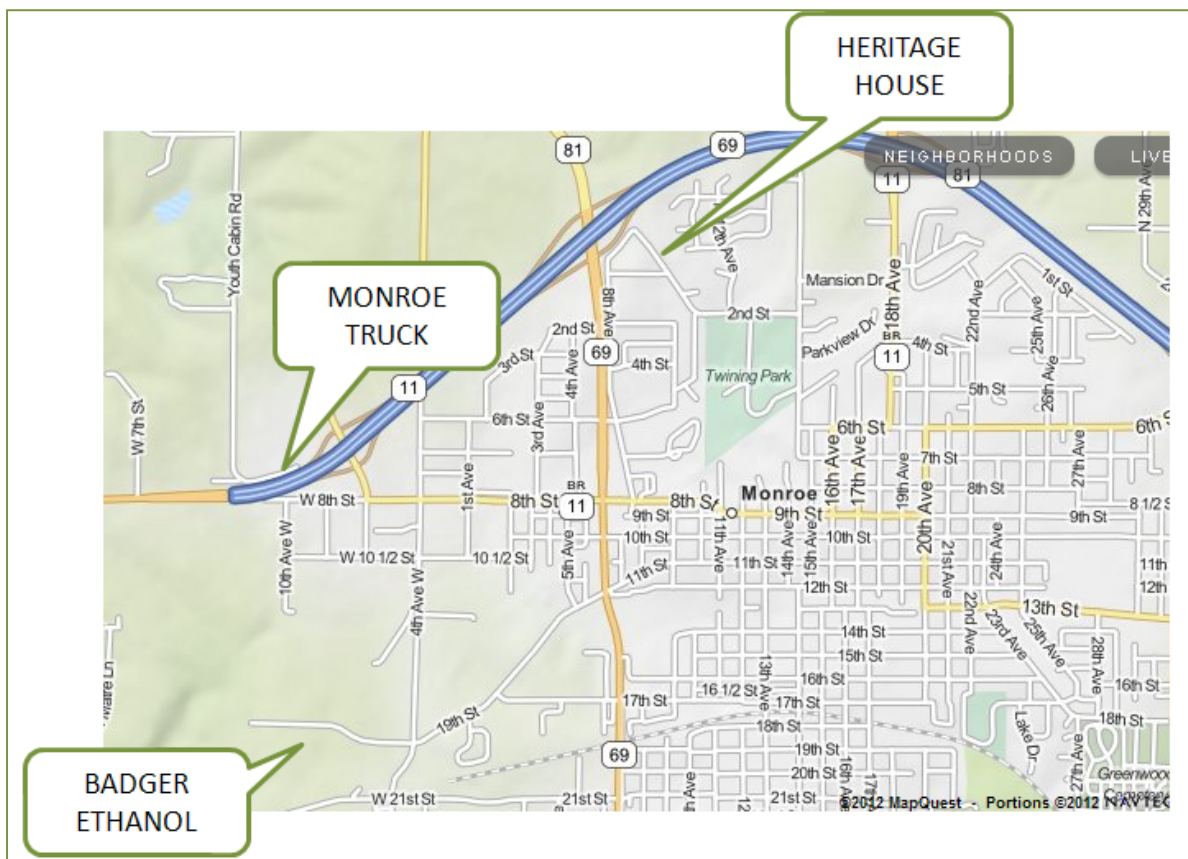
Business Meeting to follow dinner

Meet our Guest Speaker, Ryan Percy

I grew up on a beef cattle and custom hay baling farm in western Missouri. In between summers of earning a bachelor degree in Agriculture Systems Management from the University of Missouri-Columbia, I interned for my local John Deere Dealership primarily in demoing and servicing hay equipment for our new dealership locations. Following graduation I served as a Technical and Sales instructor for Deere and Company in Columbus Ohio. There I primarily focused on hay tools, tractors, and forage harvesters. While working as an instructor I earned a Master Degree in Agricultural Education from the University of Illinois.

After five years with Deere I had the opportunity to join KUHN as the Haytool Product Manager. I manage the direction of current and future haytool machinery both domestically manufactured as well as imported from our European factories. My responsibilities include working with and assisting Engineering, Test, Product Support, Marketing, and the Director of Sales. I also actively participate in joint development projects with our European Headquarters which includes travel to farms in Western and Eastern Europe.

MAY 23rd TOUR AND MEETING – MAPS



MONROE TRUCK

Mapquest does not give the correct location!

If you are coming from the East, take 6th Avenue exit off of Hwy. 11 West. At the end of the ramp, turn right. Take a left at the stop light and follow the road past the Employment Services building to the Main Building.

If you are coming from the West, take 6th Avenue exit off of Hwy. 11 East. At the end of the ramp, turn left. Take a left at the stop light and follow the road past the Employment Services building to the Main Building.

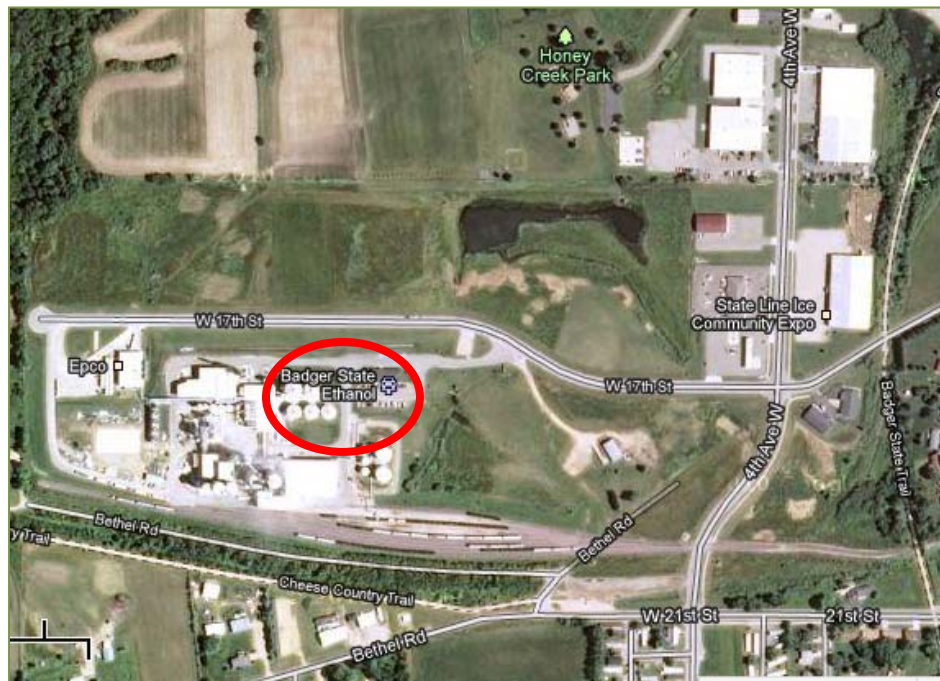


Badger State Ethanol Plant

If you are using a GPS or other navigation device please enter the address below:

1637 4th Avenue West, Monroe, Wisconsin 53566

- From Monroe Truck:
- Head East on W. 7th Street,
 - follow this street until the intersection of Cty Hwy N/6th Ave W
- Turn South onto Cty Hwy N/ 6th Ave W
 - Over Hwy 11 and then ~1 block more
- Turn East onto W 8th St. and travel 1 block
- Turn South onto 4th Street and travel ~4 blocks
- Turn West onto W. 17th St.
 - Bader State Ethanol be on the South side of the road (~2 blocks)

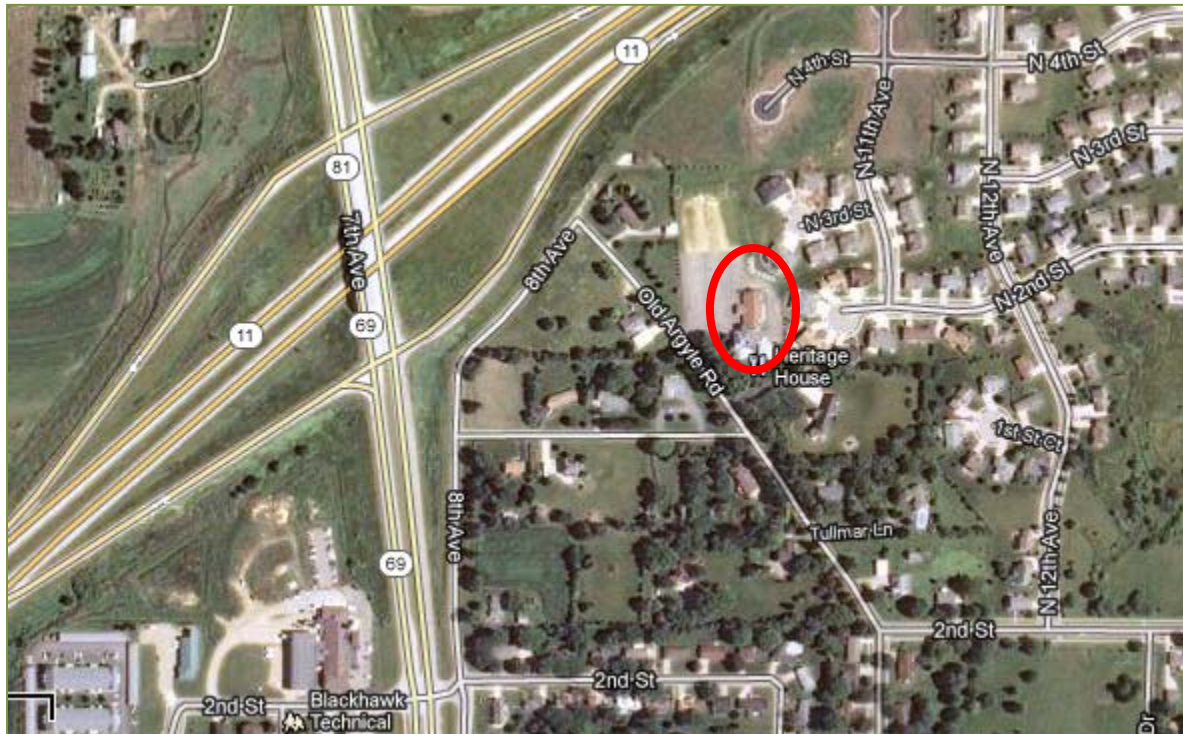


Heritage House

222 Old Argyle Rd. Monroe, WI 53566

From Bader State Ethanol:

- Take W17th Street
- In ~4 blocks continuing going straight onto 19th Street
 - (17th street will “Y” to the right)
 - Continue on 19th street for ~4 block
- Turn North onto Hwy 69/7th Ave
 - Continue for ~6 blocks
- Turn East onto 2nd St
- Take immediate turn North onto 8th Ave
 - Follow 8th Ave until it ends
- Turn South
 - Heritage House will be on the East side of the road



MAY 23rd TOUR AND MEETING – REGISTRATION



STUDENT COUPON

Students are Always Free....

*We just ask that you register by the
deadline.*

Use the coupon code “student”
during registration

JUST 3 Easy Steps to Register!

Save a stamp, save your fax!!!

STEP 1: Go to www.wiasabe.org

STEP 2: Click on “EVENT REGISTRATION” on the menu

Step 3: Fill out the form and click “submit”

You’ll receive an email confirming your registration

If you need to change your registration just contact Dan Thiemke at
ThiemkeDanielB@JohnDeere.com

**Of course you can also register the old fashion way....
But don't you want to try our new registration feature???**

**REGISTRATION
SECTION MEETING
May 23, 2012**

	Number Attending	Cost	Total
Monroe Truck Tour 1 :30-2 :30pm	_____	Free	
Badger Ethanol Plan 3 :00-4 :00pm	_____	Free	
Dinner @ Heritage House Restaurant Speaker @5 pm, Dinner @ 6pm	_____	\$25/person students free	\$ _____

Information:

Name(s): _____

Address: _____
 City/Town: _____ State/Zip _____
 Telephone: (____) _____ - _____ FAX: (____) _____ - _____
 e-mail: _____

Return completed form and send by **MAY 17th** to:

Dan Thiemke

ASABE Wisconsin Section Program Chair
[John Deere Horicon Works](#)
 300 North Vine Street
 Horicon, WI 53032
 P: 920-485-5074
 F: 920-485-5169
ThiemkeDanielB@JohnDeere.com

Details from the March 28th Awards Meeting

Milestone Membership Anniversaries

25 Years

Bernt J. Hammarback
Thomas Jerome Tooley
Kevin R. Klubertanz
Randal S. Knurr
Timothy J. Koch
Richard D. Their

Douglas Reinemann

40 Years

Gene L. Nimmer
Paul O. Reilly
Richard J. Straub

50 Years

James F. Gastel

61 Years

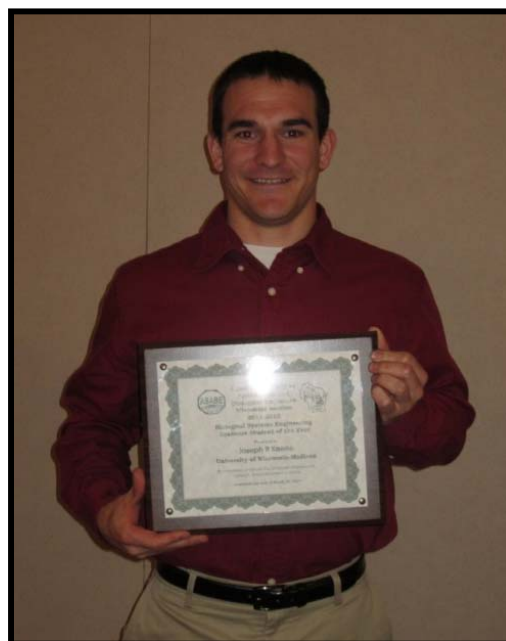
Frederick H. Buelow

Megan May of UW-Madison is the recipient of the **Biological Systems Engineering Student of the Year Award**.

The purpose of this award is to recognize an undergraduate student in preparation for a career in the profession.

Joseph Keene, is the recipient of the **Biological Systems Engineering Graduate Student of the Year Award**.

The purpose of this award is to recognize a graduate student enrolled in a Biological System Engineering program for singular achievement in developing and or advancing the technology of engineering for food and agriculture.



Brian and Jill Huenink are the recipients of the 2012 Young Engineer Award.

The purpose of this award is to recognize young Wisconsin Section members for their outstanding contributions to the advancement of the Agricultural and Biological Systems Engineering profession.

Brian and Jill have blazed impressive careers since they graduated from UW Madison almost 10 years ago. Both Brian and Jill have made important contributions to the profession through their work activities at John Deere. The Huenink family has recently taken a bold career step by taking advantage of a program that allows John Deere employees to work remotely from home. This has allowed the Huenink's to fulfill a lifelong dream of moving back to the family farm in Sheboygan County while still maintaining professional employment with John Deere Product Engineering Center in Waterloo, IA.

Brian and Jill certainly exemplify a "team" couple. But their team effort goes beyond support of each other and their growing young family. They are also a true team when it comes to their professional roles in our Society. Both Brian and Jill have been incredibly active in Section and National ASABE leadership. It is very rare that you see only one Huenink at ASABE meetings. They are always there as a team, working together to better our Society. And the Huenink's don't just participate in the Society, they take active leadership roles. While Jill's professional arc and Society activities have naturally ebbed a bit as she transitions to the important role of mother to their three children, she and Brian remain fully committed to our Society and the profession of engineering.



Barry Bauman is the recipient for the Wayne G. Russell Award.

The purpose of this award is to recognize an individual or organization demonstrating exceptional commitment to helping the Wisconsin agricultural industry adopt new electric technology, farmstead mechanization, and farm equipment. The award is named after the late Wayne G. Russell who in the late 1950's, as a Rural Promotion Manager for Wisconsin Power and Light, formulated the idea for the Electric Power and Equipment Farm Show (now the Midwest Ag. Expo.).

Barry was hired by WP&L as an Ag Engineer when he started his career about 40 years ago. He was very involved in agricultural issues in his position be it agricultural code issues, solar grain drying, time-of-day for agriculture, alternative energy, stray voltage, equipotential planes, neutral isolation.

Barry has served for many year on National Electric Code Panels 13 and 19 and has been instrumental in developing the National Electric Code as it applies to Agriculture. Barry was also very involved in the Electric Power and Farm Equipment Show when WP&L managed and ran the show. It was his thoughts that came up with "booth ideas" and design a number of times.

He was the Ag Engineer who assisted Ag Reps on stray voltage cases before we had any process or procedure and was involved in coming up with early stray voltage procedures. He has also been an active member in ASABE, and is presently chair of IET-435 Electric Code for Agriculture.



Secretary's Report

20 April 2012

The March 28th ASABE Wisconsin Section meeting was held in conjunction with the Wisconsin Public Service Farm Show in Oshkosh.

Following the show members and guests toured Rosendale Dairy located in Pickett, WI. The tour started with an in-depth discussion of the daily activities required to make a dairy this size operate smoothly. Following the discussion attendees were taken to the second story atrium where they were able to watch the two 80-cow side-by-side rotary parlors in action. On this particular day more than 8,000 cows were being milked three times per day. Next attendees were able to go down into the milking area to view the rotary parlors up close. Finally attendees were able to see one of the two gigantic free stall barns used to house the animals.

Following the tour was a social hour at LaSure's Hall, followed by a presentation by Todd Boehne on large livestock operations and their approval process in Wisconsin.

Next members and guests were treated to a buffet style dinner followed by the business meeting and presentation of section awards.

To close out the meeting, the new section officers were introduced.

1. 4:00 – 5:00 Social time
2. 5:10 – 5:52 Guest Speaker
3. 5:52 – 6:00 Introduction of students and guests
4. 6:00 – 6:45 Dinner
5. 6:45 – 6:47 Officer reports/Section Business
6. 6:47 – 7:15 Awards presentation
7. 7:15 – New officer introductions

Meeting was adjourned at 7:20

Respectfully Submitted,

Jeffrey M. Marggi
ASABE Wisconsin Section Secretary 2012-2013

Treasurer's Report

20 April 2012

Opening Balance	\$8,629.53
------------------------	-------------------

Revenue:

<u>Date</u>	<u>From</u>	<u>Memo</u>	<u>Amount</u>
01/23/2012	ASABE	Dues Reimbursement	\$180.50
04/05/2012	Members	Meeting Revenue	\$1150.00

Total: \$1330.50

Expenses:

<u>Date</u>	<u>To</u>	<u>Memo</u>	<u>Check #</u>	<u>Amount</u>
04/03/2012	Megan May	Student Award	599	\$150.00
04/03/2012	La Sures Inc.	Spring Meeting Food	625	\$932.14
04/09/2012	Joseph Keene	Student Award	598	\$150.00

Total: \$1232.14

Closing Balance	\$8,727.89
------------------------	-------------------

Respectfully Submitted,

Jeffrey M. Marggi
ASABE Wisconsin Section Treasurer 2012-2013

Wisconsin Section ASABE 2012-2013 Officer Team

Chair

Dan Thiemke
John Deere Horicon Works
(920) 485-5074

Past Chair

Tim Koch
Schreiber Foods, Inc
(920) 988-2408

Vice Chair Program (Chair-Elect)

Richard Straub
UW-Madison
(608) 262-3311

Vice Chair Awards

Troy Runge
UW-Madison
608-890-3143

Vice Chair Membership

Shane Williams
Kuhn North America
(608) 897-2131

Vice Chair Public Relations

Amanda Crowe
USDA-NRCS
(608) 576-7651

Secretary and Treasurer

Jeff Marggi
McFarlane Mfg. Corporation
(608) 897-2131

Webmaster

Nate Dudenhoeffer
Dudenhoeffer Agricultural Technology
(608) 432-5617

Career Development Committee

Neal Stoffel (Chair)
Kondex Corporation
(920) 269-4100

Chris Tamm
Brillion Iron Works
920-756-6361

Tom Hoffman
Kuhn North America
608-897-2131

Nomination Committee

Bill Bassett
Kuhn North America, Inc.
(608) 897-2131

Rod Zimmerman
Kuhn North America, Inc.
(608) 897-4508